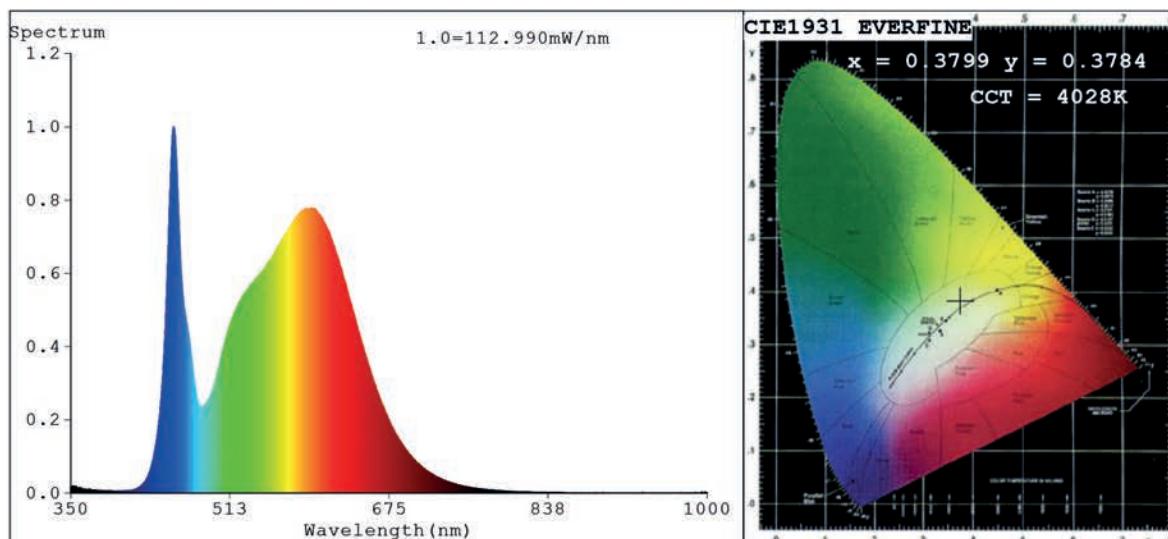


Spectrum Test Report



Color Parameters:

Chromaticity Coordinate: $x=0.3799$ $y=0.3784$ $u'=0.2241$ $v'=0.5022$
 CCT=4028K(Duv=0.0009) Dominant WL:Ld =578.5nm Purity=27.6%
 Ratio:R=18.2% G=78.0% B=3.8%; Peak WL:Lp=454.7nm FWHM=19.3nm
 Render Index:Ra=82.6 CRI=75.8 TM30:Rf=81 Rg=93 Lav=569.0nm
 R1 =81 R2 =91 R3 =96 R4 =79 R5 =80 R6 =86 R7 =85
 R8 =63 R9 =7 R10=76 R11=78 R12=56 R13=84 R14=98 R15=75

Photo Parameters:

Flux = 5054 lm Eff. : 172.35 lm/W Fe = 15.29 W

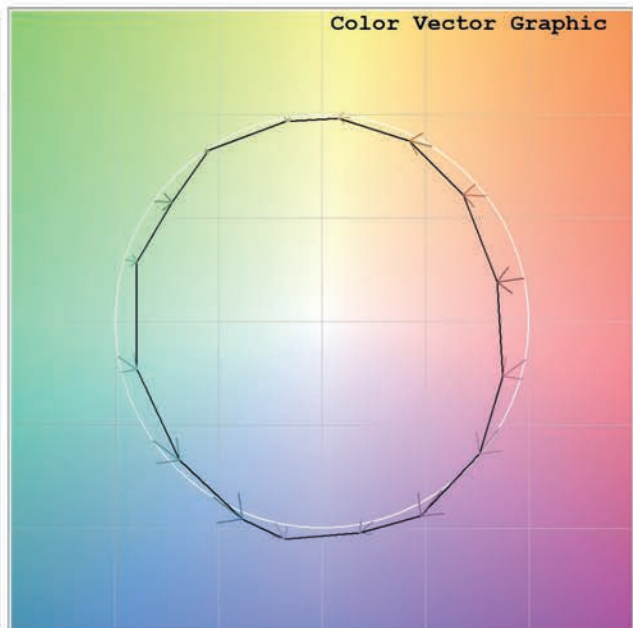
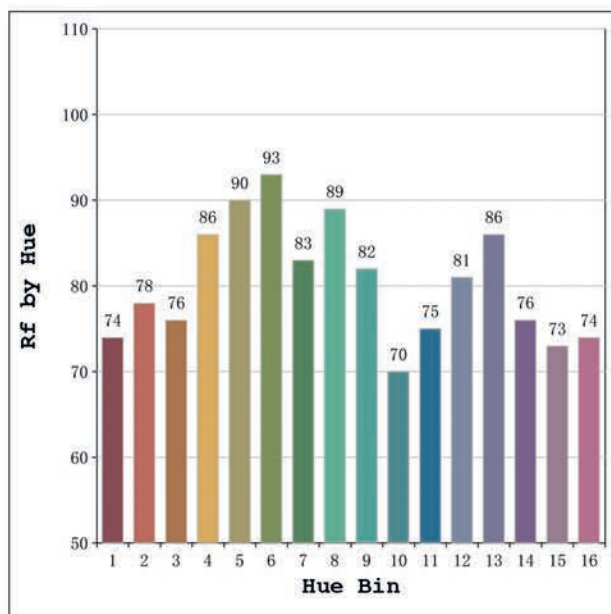
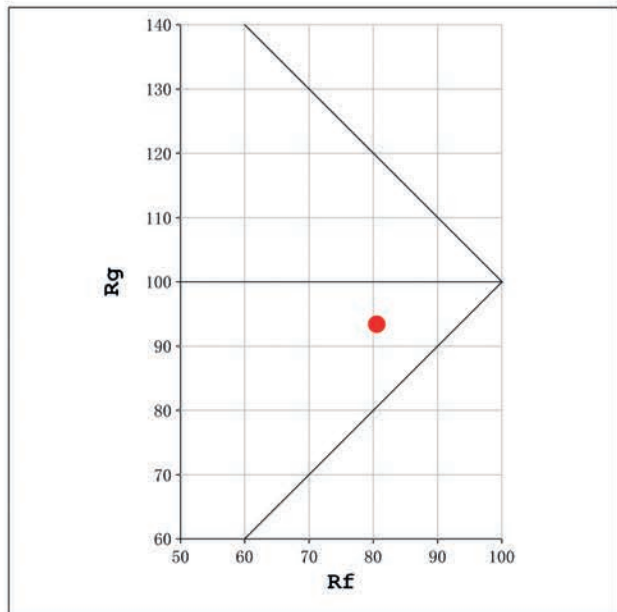
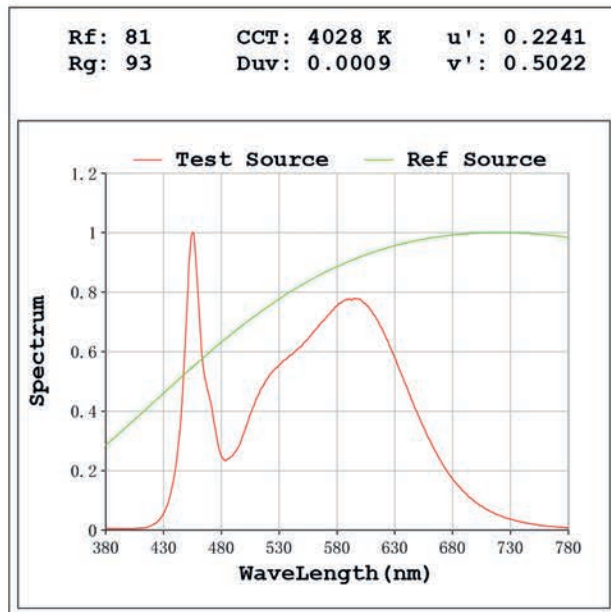
Electrical parameters:

V = 23.998 V I = 1.222 A P = 29.32 W PF = 1.000

Status: Integral T = 250 ms Ip = 44708 (68%)

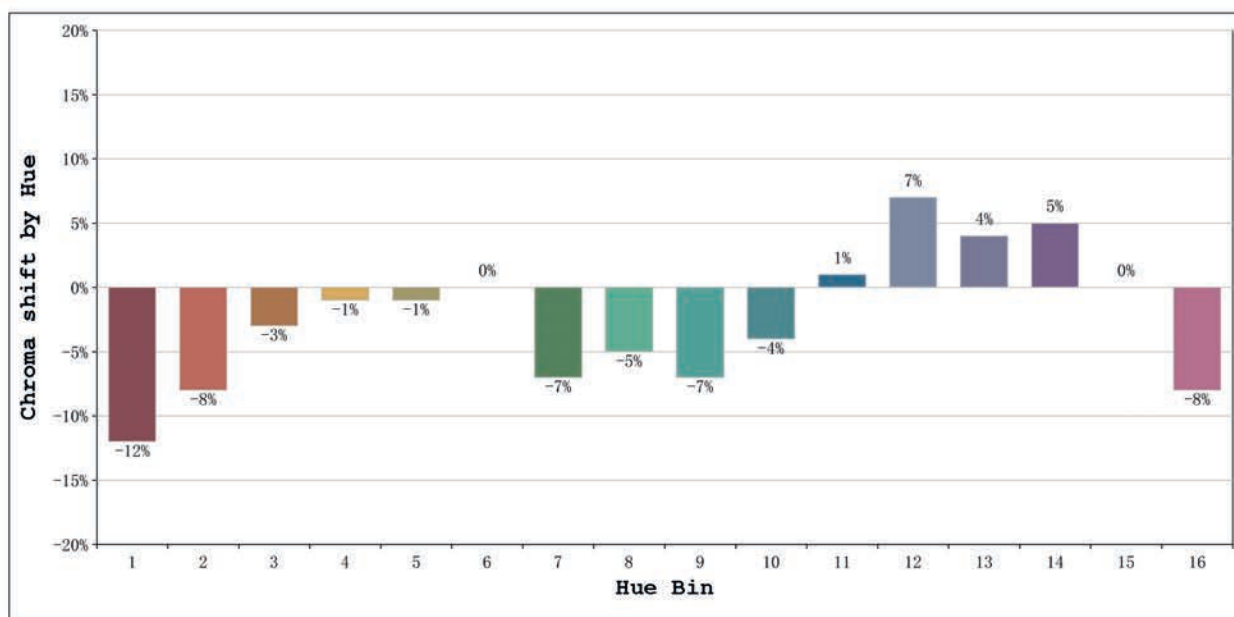
Model:Córdoba High Efficiency
 Tester:Sergio Carneros
 Temperature:27Deg
 Manufacturer:Luz Negra S.L.

Number: 33.208
 Date:2024-11-21 08:07:39
 Humidity:35%
 Remarks:100cm de tira flexible



Model: Córdoba High Efficiency
 Tester: Sergio Carneros
 Temperature: 27Deg
 Manufacturer: Luz Negra S.L.

Number: 33.208
 Date: 2024-11-21 08:07:39
 Humidity: 35%
 Remarks: 100cm de tira flexible



			Graphic shift(%)	
Hue Bin	Hue Angle	Rf	Chroma	Hue
1	0.0° - 22.5°	74	-12	1
2	22.5° - 45.0°	78	-8	7
3	45.0° - 67.5°	76	-3	11
4	67.5° - 90.0°	86	-1	5
5	90.0° - 112.5°	90	-1	3
6	112.5° - 135.0°	93	0	-1
7	135.0° - 157.5°	83	-7	-3
8	157.5° - 180.0°	89	-5	0
9	180.0° - 202.5°	82	-7	8
10	202.5° - 225.0°	70	-4	15
11	225.0° - 247.5°	75	1	17
12	247.5° - 270.0°	81	7	6
13	270.0° - 292.5°	86	4	-6
14	292.5° - 315.0°	76	5	-14
15	315.0° - 337.5°	73	0	-14
16	337.5° - 360.0°	74	-8	-9

Model:Córdoba High Efficiency
Tester:Sergio Carneros
Temperature:27Deg
Manufacturer:Luz Negra S.L.

Number: 33.208
Date:2024-11-21 08:07:39
Humidity:35%
Remarks:100cm de tira flexible